

CERTIFICATE OF COMPLETION AND COMPLIANCE

To: Hamilton County Surveyor

Re: Lot 28 Woodhaven Subdivision

I hereby certify that:

1. I am a Registered Land Surveyor or Engineer in the State of Indiana .
2. I am familiar with the plans and specifications for the above referenced subdivision .
3. I have personally observed and supervised the completion of the drainage facilities for the above referenced subdivision .
4. The drainage facilities within the above referenced subdivision to the best of my knowledge , information and belief have been installed and completed in comformity with all plans and specifications .

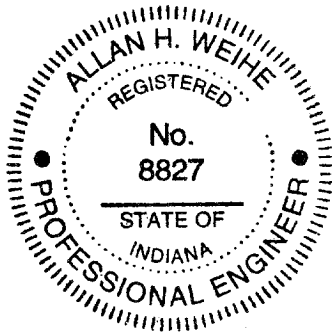
Signature: Allan H. Weihe Date: December 8, 2003

Type or Print Name: Allan H. Weihe

Business Address: 10505 N. College Avenue, Indianapolis, IN. 46280

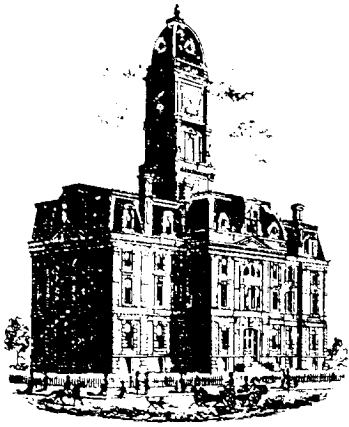
Telephone Number: 317-846-6611

SEAL



INDIANA REGISTRATION NUMBER

#8827



SURVEYOR'S OFFICE
Hamilton County

Kenton C. Ward, CFM
Surveyor of Hamilton County
Phone (317) 776-8495
Fax (317) 776-9628

Suite 188
One Hamilton County Square
Noblesville, Indiana 46060-2230

To: Hamilton County Drainage Board

December 18, 2007

Re: Woodhaven Drain: Lot 28 Relocation

Attached are as-builts, certificate of completion & compliance, and other information for Woodhaven Lot 28 Relocation. An inspection of the drainage facilities for this section has been made and the facilities were found to be complete and acceptable.

During construction, changes were made to the drain, which will alter the plans submitted with my report for this drain-dated September 11, 2001. The report was approved by the Board at the hearing held September 24, 2001. (See Drainage Board Minutes Book 6, Page 156)
The changes are as follows:

During construction the existing 15" CMP across lot 28 was relocated. It was replaced with 15" RCP between new Structures 1 & 2 as shown on the as-builts by Weihe Engineers dated December 5, 2003, Sheet 1. Thus, 126 feet of 15" RCP was installed and 119 feet of 15" CMP was removed. Therefore, the length of the drain was lengthened by **7 feet**.

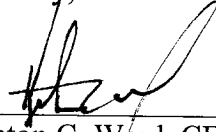
The drainage easements for this relocation were addressed by filing a re-plat of Lot 28. A subdivision non-enforcement was approved by the Board at its October 8, 2001 meeting and was recorded under instrument #200100069278 in the Hamilton County Recorder's Office.

The following sureties were guaranteed by St. Paul Fire and Marine Insurance Co. and released by the Board on its January 14, 2008 meeting.

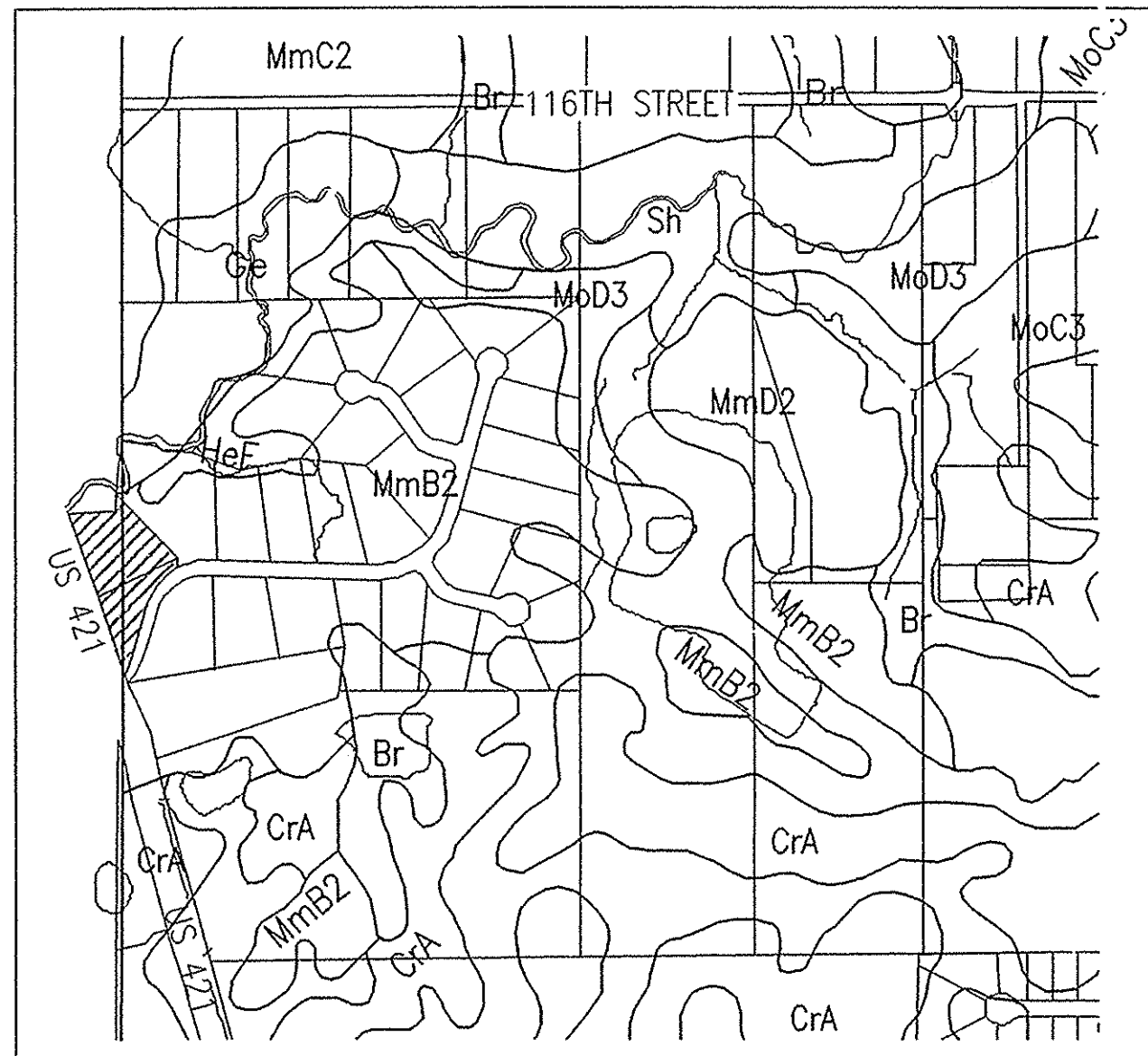
Insured For: Storm Sewers
Amount: \$3600.00
Issue Date: June 5, 2001

I recommend the Board approve the drain's construction as complete and acceptable.

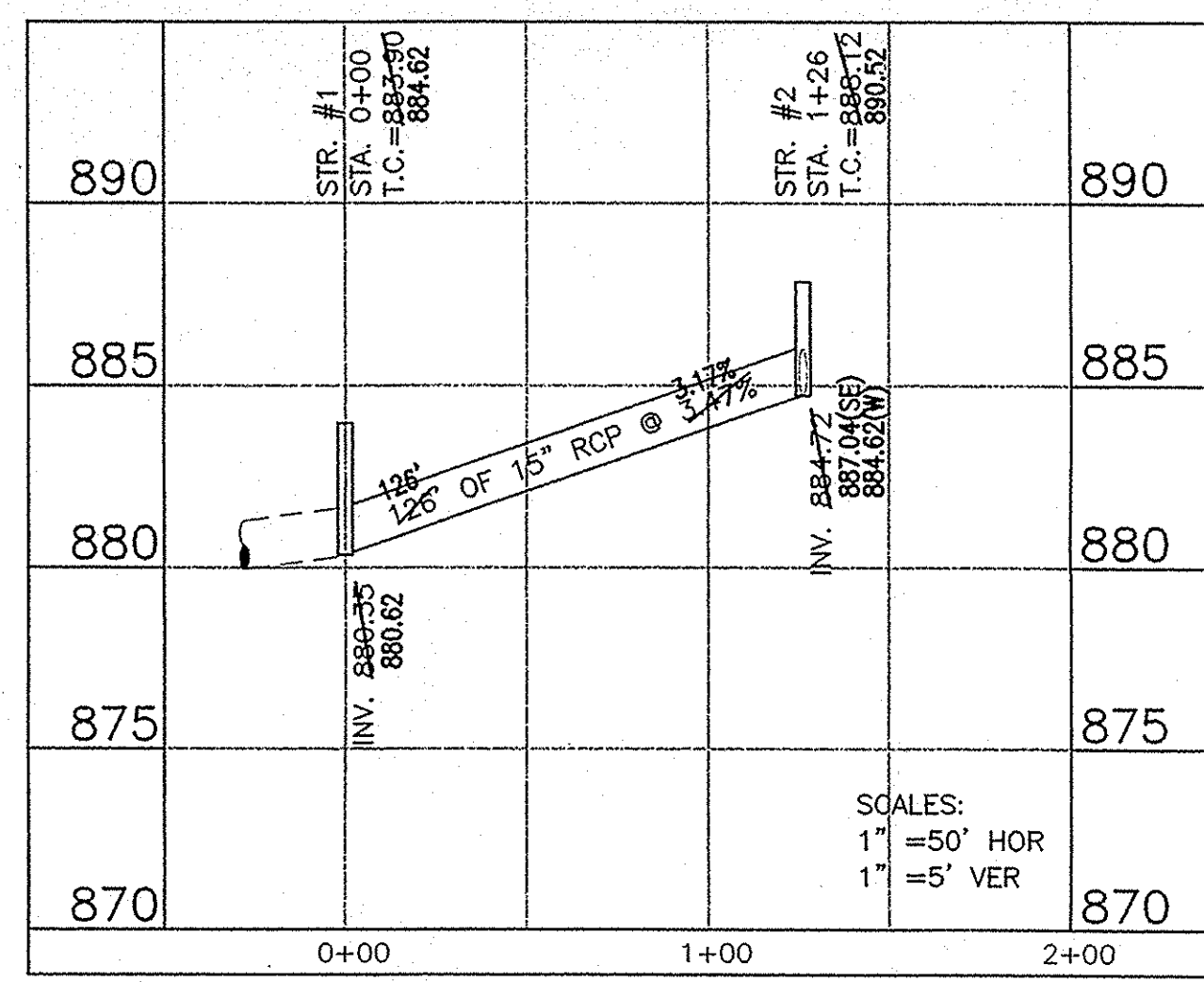
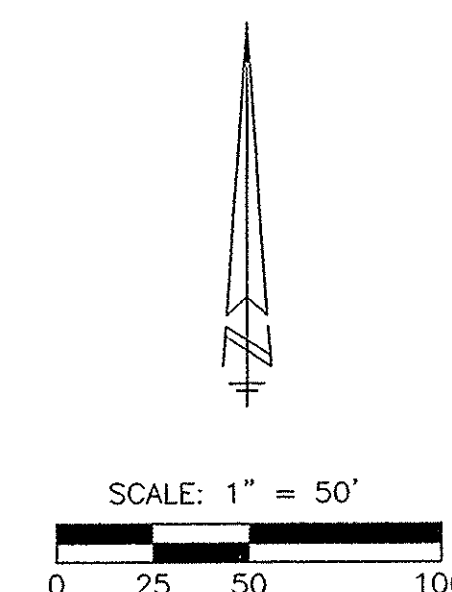
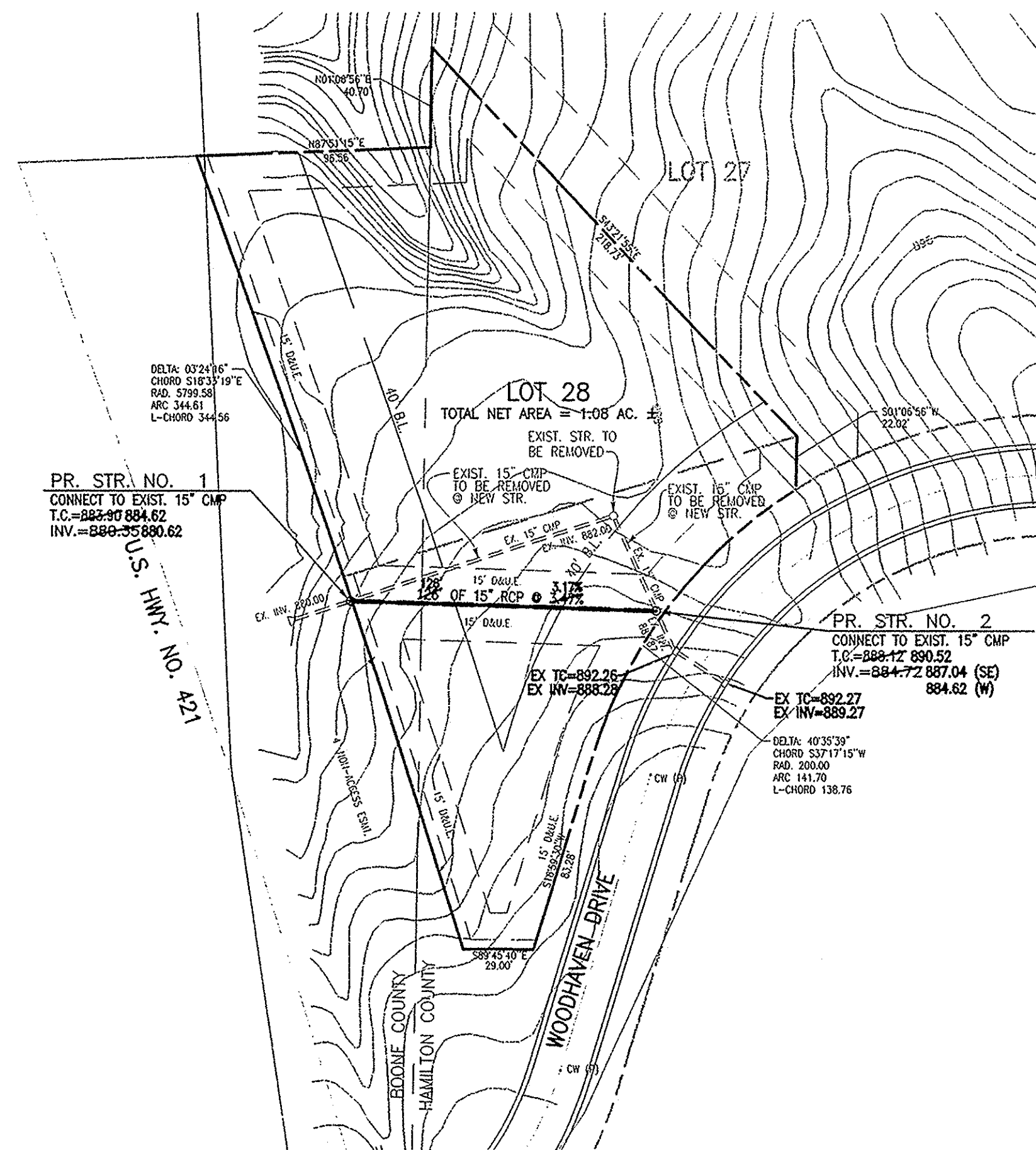
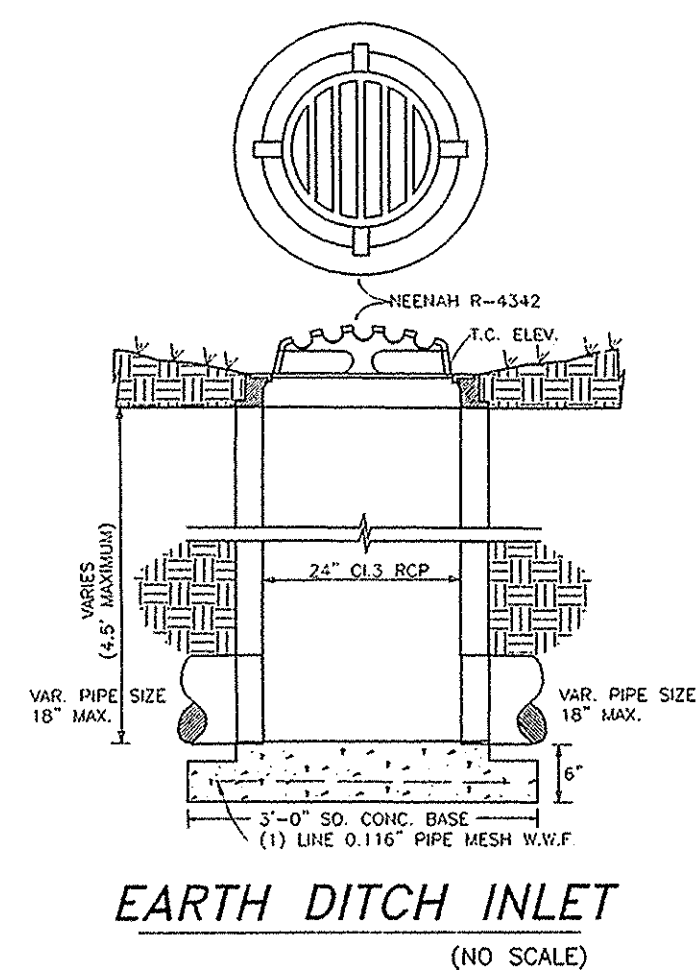
Sincerely,

A handwritten signature in black ink, appearing to read 'K. Ward', written over a horizontal line.

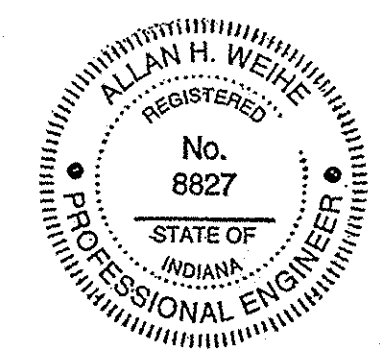
Kenton C. Ward, CFM
Hamilton County Surveyor



LOCATION MAP



This information was gathered for input into the Hamilton County Geographic Information System (GIS). This document is considered an official record of the GIS.
 Entry Date: 12-18-07
 Entered By: SLM



RECORD DRAWING
 STORM SEWER AS-BUILTS
 STORM SEWER STRUCTURES ONLY
 DECEMBER 5, 2003
 Allan H. Weihe
 ALLAN H. WEIHE-REG P.E.-IN #8827

WEIHE ENGINEERS, INC.
 ALLAN H. WEIHE, P.E., L.S., PRESIDENT
 10505 NORTH COLLEGE AVENUE
 317-846-6011 FAX: 317-843-0546
 TOLL-FREE 800-432-6408
 CIVIL ENGINEERS * LAND PLANNERS * LAND SURVEYORS * LANDSCAPE ARCHITECTS

PROJECT NO. W001136
 DWG. NAME: W01136SS.DWG
 DATE: 5-30-01 L.S.
 DATE: 12-5-03
 REVISIONS: ADDITIONS & REV. PER HALL CO. SURVEYOR AS-BUILTS

JOHN OLENICK
 RE-PLANT BLOCK "A" OF WOODHAVEN, SECTION ONE
 STORM SEWER PLAN & PROFILE