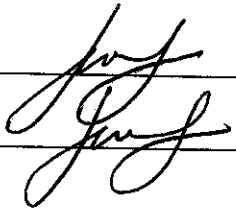



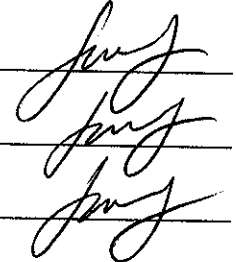
Drain: STULTZ : ALMONA **Drain #:** 45
Improvement/Arm: STAMPER RELOCATION
Operator: J. LIVINGSTON **Date:** 6-25-04
Drain Classification: Urban/Rural **Year Installed:** 1975 SOMETHING

GIS Drain Input Checklist

- Pull Source Documents for Scanning
- Digitize & Attribute Tile Drains
- Digitize & Attribute Storm Drains
- Digitize & Attribute SSD
- Digitize & Attribute Open Ditch
- Stamp Plans
- Sum drain lengths & Validate
- Enter Improvements into Posse
- Enter Drain Age into Posse
- Sum drain length for Watershed in Posse
- Check Database entries for errors







Gasb 34 Footages for Historical Cost
Drain Length Log

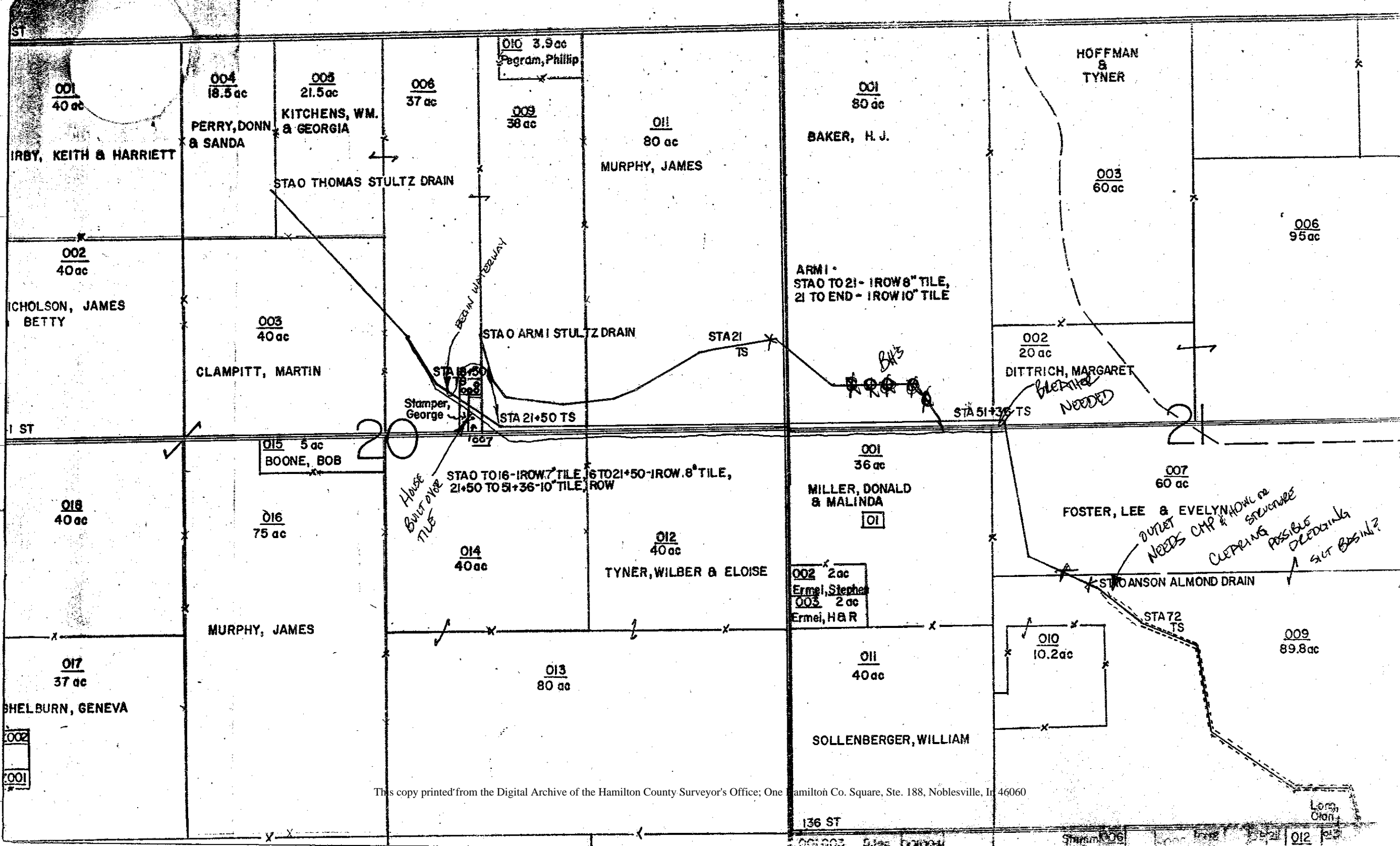
Drain-Improvement: STULTZ ; ALMOND - STAMPER RELOCATION

Drain Type:	Size:	Length	Length (DB Query)	Length Reconcile	If Applicable	
					Price:	Cost:
TILE	N/A		590'		N/A	N/A

Sum: _____ 590' _____ N/A

Final Report: _____

Comments:
ACCORDING TO STEVE BAITEZ, THE LAND OWNER (GEORGE STAMPER)
RELOCATED THE TILE FOLLOWING AN ADDITION TO HIS HOME
WHICH WAS BUILT OVER THE ORIGINAL TILE. TIE-IN POINTS
ARE APPROXIMATE; THE LENGTH OF TILE IS THEREFORE
APPROXIMATE AS WELL.



001
40 ac

004
18.5 ac

005
21.5 ac

006
37 ac

010 3.9 ac
Pegram, Phillip

009
38 ac

011
80 ac

001
80 ac

HOFFMAN
&
TYNER

003
60 ac

006
95 ac

002
40 ac

003
40 ac

STAO ARM I STULTZ DRAIN

STA 21
TS

ARM I -
STAO TO 21 - 1 ROW 8" TILE,
21 TO END - 1 ROW 10" TILE

002
20 ac

DITTRICH, MARGARET

STA 51+36 TS

NICHOLSON, JAMES
BETTY

CLAMPITT, MARTIN

Stamper,
George

STA 21+50 TS

015 5 ac
BOONE, BOB

STAO TO 16 - 1 ROW 7" TILE, 16 TO 21+50 - 1 ROW 8" TILE,
21+50 TO 51+36 - 10" TILE, ROW

001
36 ac

MILLER, DONALD
& MALINDA

007
60 ac

FOSTER, LEE & EVELYN
OUTLET NEEDS CMP & HOW TO STORMWATER
CULVERTING POSSIBLE DEBRIS?
SET BASIN?

018
40 ac

016
75 ac

014
40 ac

012
40 ac

TYNER, WILBER & ELOISE

002 2 ac
Ermei, Stephen
003 2 ac
Ermei, H & R

STAO ANSON ALMOND DRAIN

STA 72
TS

MURPHY, JAMES

013
80 ac

011
40 ac

SOLLENBERGER, WILLIAM

009
89.8 ac

017
37 ac

SHEL BURN, GENEVA

136 ST

Long
Cran.

012