

SURVEYOR'S OFFICE
Hamilton County

Kenton C. Ward, CFM
Surveyor of Hamilton County
Phone (317) 776-8495
Fax (317) 776-9628

Suite 188
One Hamilton County Square
Noblesville, Indiana 46060-2230

Map Correction-Field Verification

Drain Number: #88 JR Collins

Drain Length: 4954

Drain Name: Hamilton Crossing Phase II
West

Change +/-: -40

Date: 12-11-07

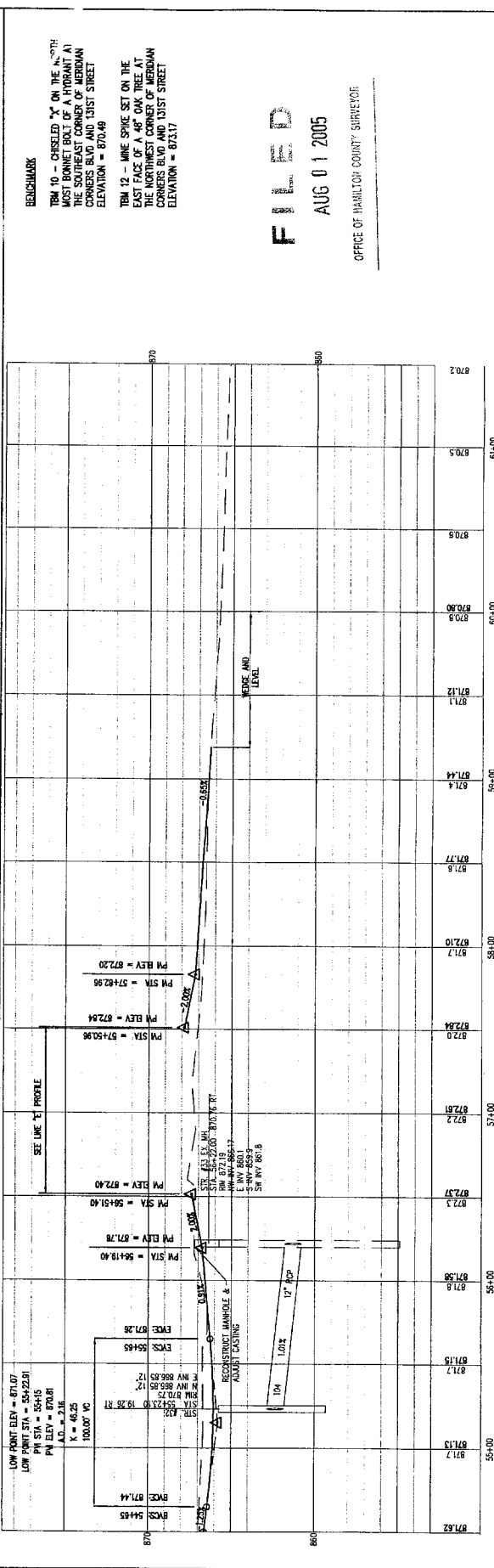
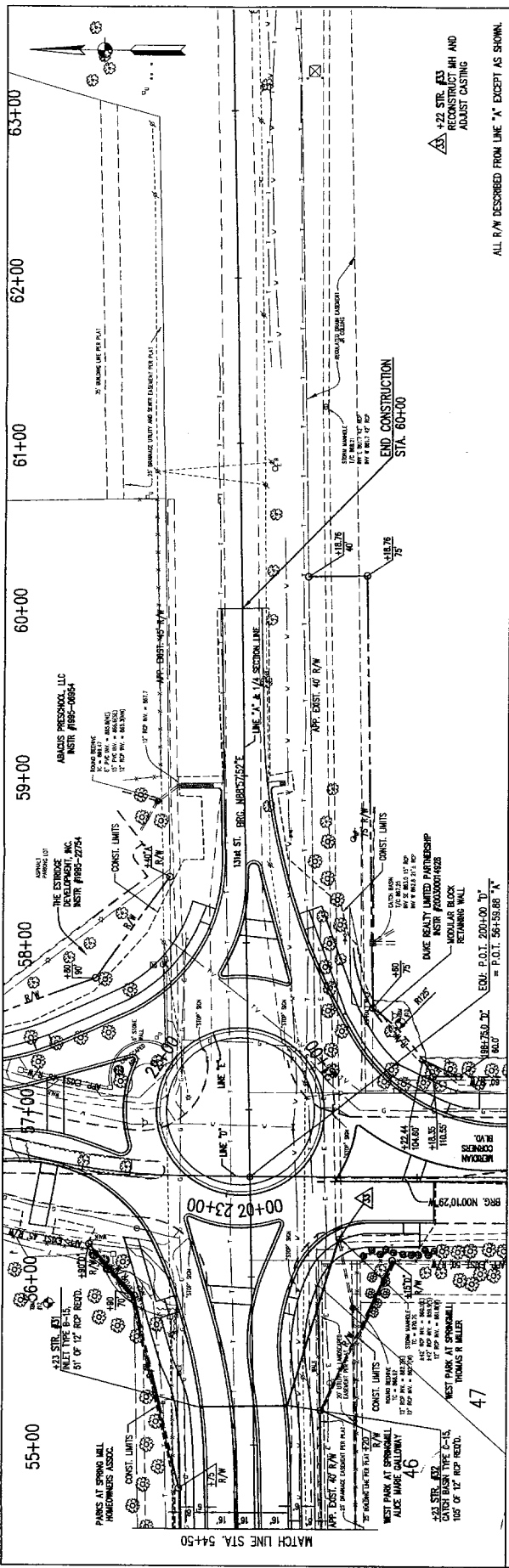
New Length: 4914

Verified By: Luther Cline

Notes & Sketch:

See attached Road Plan. Structure 734 and 40' of 15" RCP were removed due to the roundabout built by the City of Carmel. This roundabout was installed at the intersection of 131st St & Meridian Corners Blvd.


Suzanne L. Mills
GIS Specialist



STATION	ELEVATION	DESCRIPTION
55+00	87.15	87.15
55+10	87.15	87.15
55+20	87.15	87.15
55+30	87.15	87.15
55+40	87.15	87.15
55+50	87.15	87.15
55+60	87.15	87.15
55+70	87.15	87.15
55+80	87.15	87.15
55+90	87.15	87.15
56+00	87.15	87.15
56+10	87.15	87.15
56+20	87.15	87.15
56+30	87.15	87.15
56+40	87.15	87.15
56+50	87.15	87.15
56+60	87.15	87.15
56+70	87.15	87.15
56+80	87.15	87.15
56+90	87.15	87.15
57+00	87.15	87.15
57+10	87.15	87.15
57+20	87.15	87.15
57+30	87.15	87.15
57+40	87.15	87.15
57+50	87.15	87.15
57+60	87.15	87.15
57+70	87.15	87.15
57+80	87.15	87.15
57+90	87.15	87.15
58+00	87.15	87.15
58+10	87.15	87.15
58+20	87.15	87.15
58+30	87.15	87.15
58+40	87.15	87.15
58+50	87.15	87.15
58+60	87.15	87.15
58+70	87.15	87.15
58+80	87.15	87.15
58+90	87.15	87.15
59+00	87.15	87.15
59+10	87.15	87.15
59+20	87.15	87.15
59+30	87.15	87.15
59+40	87.15	87.15
59+50	87.15	87.15
59+60	87.15	87.15
59+70	87.15	87.15
59+80	87.15	87.15
59+90	87.15	87.15
60+00	87.15	87.15
60+10	87.15	87.15
60+20	87.15	87.15
60+30	87.15	87.15
60+40	87.15	87.15
60+50	87.15	87.15
60+60	87.15	87.15
60+70	87.15	87.15
60+80	87.15	87.15
60+90	87.15	87.15
61+00	87.15	87.15
61+10	87.15	87.15
61+20	87.15	87.15
61+30	87.15	87.15
61+40	87.15	87.15
61+50	87.15	87.15
61+60	87.15	87.15
61+70	87.15	87.15
61+80	87.15	87.15
61+90	87.15	87.15
62+00	87.15	87.15
62+10	87.15	87.15
62+20	87.15	87.15
62+30	87.15	87.15
62+40	87.15	87.15
62+50	87.15	87.15
62+60	87.15	87.15
62+70	87.15	87.15
62+80	87.15	87.15
62+90	87.15	87.15
63+00	87.15	87.15

BENCHMARKS

BM 10 - CURBED "X" ON THE NORTH MOST CORNER OF A HYDRANT AT THE SOUTHEAST CORNER OF MERIDIAN AT CORNERS BLVD AND 131ST STREET ELEVATION = 870.49

BM 12 - WIRE SPIKE SET ON THE EAST FACE OF A 48" DIA. TREE AT CORNERS BLVD AND 131ST STREET ELEVATION = 873.17

FIELD

AUG 01 2005

OFFICE OF HAMILTON COUNTY SURVEYOR

ALL R/W DESCRIBED FROM LINE "A" EXCEPT AS SHOWN.

HORIZONTAL SCALE	1" = 3'
VERTICAL SCALE	1" = 3'
SURVEY BOOK	7
CONTRACT	45
DESIGNER	SSB
CHECKED	CAO
DATE	08/01/05
DESIGNED	SSB
CHECKED	CAO
DESIGNED FOR APPROVAL	SSB
CHECKED FOR APPROVAL	CAO

CITY OF CARMEL

131st STREET

PLAN & PROFILE - LINE "A"

8801 Otis Avenue
Indianapolis, Indiana
1-800-888-0332
317-888-7100

Schneider
Formerly Schneider Engineering Corp. / Nichols, Merr, Gibson & Assn.

RECOMMENDED FOR APPROVAL

DESIGNER ENGINEER

DATE

LOW POINT ELEV = 87.07
LOW POINT STA = 54+22.91
PM STA = 54+15
PM ELEV = 87.81
A.D. = 2.16
K = 46.25
100.00' VC

RECONSTRUCT MANHOLE & ADJUST CASTING

17' R/W

Storm Sewer Spacing

STATION	LEFT OR RIGHT	STATION	LEFT OR RIGHT	UPSTREAM STRUCTURE	DOWNSTREAM STRUCTURE	LENGTH	COMPOSITE "C" VALUE	AREA	C x A	SUM C x A	MIN	MIN	MIN	IN/HR	Q	TOTAL GUTTER INTAKE	PIPE SIZE	PIPE AREA	PIPE SLOPE	PIPE CAPACITY	VELOCITY	TRAVEL TIME	DOWNSTREAM T.O.P. COVER	UPSTREAM T.O.P. COVER	DOWNSTREAM INVERT	UPSTREAM INVERT	PG	RIM ELEV
55+23	LT	55+23	RT	INLET B-15	C.B. C-15	49	0.64	10121.5	0.150	5.00	5.00	-	6.98	1.002	1.002	12	0.785	1	3.870	4.93	0.17	2.90	2.41	866.85	867.34	871.07	870.75	
55+23	RT	56+22	RT	C.B. C-15	EXIST. M.H.	105	0.67	7851.19	0.121	0.271	3.00	5.17	6.92	0.808	1.810	12	0.785	1	3.870	4.93	0.36	3.95	2.90	865.80	866.85	871.07	870.75	
56+22	RT			EXIST. M.H.						0.786	5.00	6.10	6.58	1.810														870.76