

**Drain:** J M WAGNER **Drain #:** 113  
**Improvement/Arm:** JOHN M WAGNER ARM  
**Operator:** J. LIVINSTON **Date:** 7-30-01  
**Drain Classification:** Urban/Rural **Year Installed:** 1897

**GIS Drain Input Checklist**

- Pull Source Documents for Scanning JWJ
- Digitize & Attribute Tile Drains JWJ
- Digitize & Attribute Storm Drains \_\_\_\_\_
- Digitize & Attribute SSD \_\_\_\_\_
- Digitize & Attribute Open Ditch \_\_\_\_\_
- Stamp Plans \_\_\_\_\_
- Sum drain lengths & Validate JWJ
- Enter Improvements into Posse \_\_\_\_\_
- Enter Drain Age into Posse JWJ
- Sum drain length for Watershed in Posse JWJ
- Check Database entries for errors JWJ



No.

IN THE MATTER OF

*John M. Dagenor*  
*Drain*

REPORT OF DITCH VIEWERS

COMMISSIONERS' COURT.

*No 192*

FILED

NOV 0 1897

Filed. \_\_\_\_\_, 18.

CALVIN STURDEVANT,  
Aud. Hamilton Co.

Auditor.

WM. B. BURFORD, PRINTER, INDIANAPOLIS.

*ErB - 10 - 526*

Viewer's Report of *John M. Wagoner* Ditch.

To the Honorable Board of Commissioners of *Hamilton* County, Indiana:

We, the undersigned, appointed by this Court, at its *September* Term, 18 *97* to view a drain described in the certified copy of a petition and order of Court for a *Ditch*, by *John M. Wagoner* and others, handed us by the Auditor, would represent that according to said order we, on the day named therein, to-wit: the *5th* day of *October*, 18 *97*, in company with *J. A. Mitchell*, a civil engineer, made an accurate survey of the line of said proposed *Ditch* from its source to its outlet. A plat of said *Ditch* is filed herewith including the survey by the engineer, marked "Exhibit *B*." We caused stakes to be set along said line, each one hundred feet, numbering down stream, as shown by plat. We also made a computation of the total number of cubic yards of earth to be removed from said drain, and estimated the total cost for the construction of the work at *\$ 217<sup>00</sup>* Dollars. We also apportioned and set apart to each parcel of land a share of said work in proportion to the benefits received, all of which will fully appear by a tabular statement in this report. We have also set out by a statement below, the names of the owners of lands benefited with a description of each tract of land, and the amount assessed against each tract. The depth of cut, the width at bottom, and width at top along said drain is also shown in a tabular statement in this report. After a full and careful view and examination, we are of the opinion that the drain as located by the survey will be of *public utility, by benefiting one public Highway, and being a benefit to the public health and the convenience of the neighborhood; and we further believe that the cost of the construction of said ditch will be less than the benefits to be derived therefrom. and that said drainage can be best and most economically accomplished by a tile drain as indicated on page 3 of this report.*

The following statement shows who are benefited, the lands thereof and assessment thereon, location, length of each share, amount of assessments, amount of benefits, amount of dirt to be removed from each share, price thereof per cubic yard, and total cost of each share:

NAMES OF OWNERS.	DESCRIPTION OF LANDS.	Section.	Township.	Range.	Acres Assessed.	Acres Benefited.	Amount of Benefits.	Amount of Asses'ments.	From Station. To Station.	Feet Long.	Cubic Yards to be Removed.	Price per Cubic Yard.	Cost of Construction of Share.
<i>1 J. M. Wagoner.</i>	<i>Pl NE</i>	<i>NE</i>	<i>17</i>	<i>19</i>	<i>5</i>	<i>19</i>	<i>80.00</i>	<i>0</i>	<i>8+16</i>	<i>816</i>	<i>165</i>	<i>15</i>	<i>80.00</i>
<i>2 H. A. Kepner.</i>	<i>Pl SE.</i>	<i>NE</i>	<i>17</i>	<i>19</i>	<i>5</i>	<i>23</i>	<i>90.00</i>	<i>0</i>	<i>8+16</i>	<i>16+81</i>	<i>865</i>	<i>203</i>	<i>90.00</i>
<i>5 F. F. Kepner.</i>	<i>Pl SW</i>	<i>NE</i>	<i>17</i>	<i>19</i>	<i>5</i>	<i>5</i>	<i>10.00</i>	<i>0</i>	<i>16+6</i>	<i>20+10</i>	<i>104</i>	<i>19</i>	<i>10.00</i>
<i>4 Sarah Overdorf.</i>	<i>Pl N 1/2 NW</i>	<i>NW</i>	<i>16</i>	<i>19</i>	<i>5</i>	<i>3</i>	<i>6.00</i>	<i>0</i>	<i>15+4</i>	<i>15+6</i>	<i>62</i>	<i>12</i>	<i>6.00</i>
<i>3 Granda Overdorf.</i>	<i>Pl S 1/2 NW</i>	<i>NW</i>	<i>16</i>	<i>19</i>	<i>5</i>	<i>7</i>	<i>16.00</i>	<i>0</i>	<i>16+31</i>	<i>15+44</i>	<i>163</i>	<i>32</i>	<i>16.00</i>
<i>6 Noblesville Township Highway</i>	<i>Pl SW in NE 1/4 of 17 and NW 1/4 of 16</i>						<i>15.00</i>	<i>0</i>	<i>20+10</i>	<i>24+20</i>	<i>110</i>	<i>18</i>	<i>15.00</i>

# Viewer's Report of

# Ditch.

TABULAR STATEMENT OF STATIONS, WIDTH, DEPTH, LENGTH, ETC

STATIONS.	WIDTH AT TOP.		DEPTH OF CUT.		WIDTH AT BOTTOM.		WIDTH OF CLEARING OR TIMBER.
	FEET.	INCHES.	FEET.	TENTHS.	FEET.	INCHES.	

## Course <sup>94</sup> Manner of Construction of Ditch.

Beginning five hundred seventy-four feet north and four hundred twenty-eight feet west of the Northeast-corner of the Northeast-quarter of the Northeast-quarter of Section 17 Township 19 North, Range 5 East, run thence south 37° west 385 feet; thence south 44° west 115 feet; thence south 16° west 200 feet; thence south 22½° west 100 feet; thence south 33° west 342 feet; thence south 27° west 94 feet; thence south 53° west 64 feet; thence north 85° west 180 feet; thence south 75° west 177 feet; thence south 32° west 201 feet; thence south 82° west 62 feet; thence south 41° west 200 feet, and terminating into and open ditch known as the David Learning Ditch, at or near the center of the southwest quarter of the northeast quarter of Section 17 Township 19 North, Range 5 East of the 2d prime Meridian.

From Station 0 to Station 21+20 shall consist of one row of 12 inch tile and the tile used must be of good quality, well matched and laid in a true line and to the proper grade, and must be inspected by the engineer before being covered, and after being received, the earth excavated must be placed in and over the line of the ditch, in such manner so as not to injure or replace the tile, and to the entire satisfaction of the engineer in charge.

The ditch shall be finished at end by two, two-foot sewer tile and a stone wall, 8ft long 3ft high and 2ft thick, laid up in mortar made from cement and sand, in proportion of 1 part cement to 5 parts sand.

### GENERAL SPECIFICATIONS AND SUGGESTIONS.

The length of the ditch as located is 2120 feet  
 The fall of the established grade is  $\frac{20}{100}$  <sup>94</sup>  $\frac{140}{100}$  feet, from Station 0 to Station 16, is  $\frac{20}{100}$  feet, to 100 feet  
 " " 16 " " 21+20 "  $\frac{140}{100}$  " " 100 "

The total fall is 10.50 feet to the entire ditch or 2120 feet.

Thomas E. Bowles } Viewers  
 Levi Krueger }  
 William Starn }



SURVEYOR'S OFFICE  
**Hamilton County**

*Kenton C. Ward, Surveyor*

773-6110 Ext. 19

*Noblesville, Ind. 46060* October 10 1980

TO: Hamilton County Drainage Board

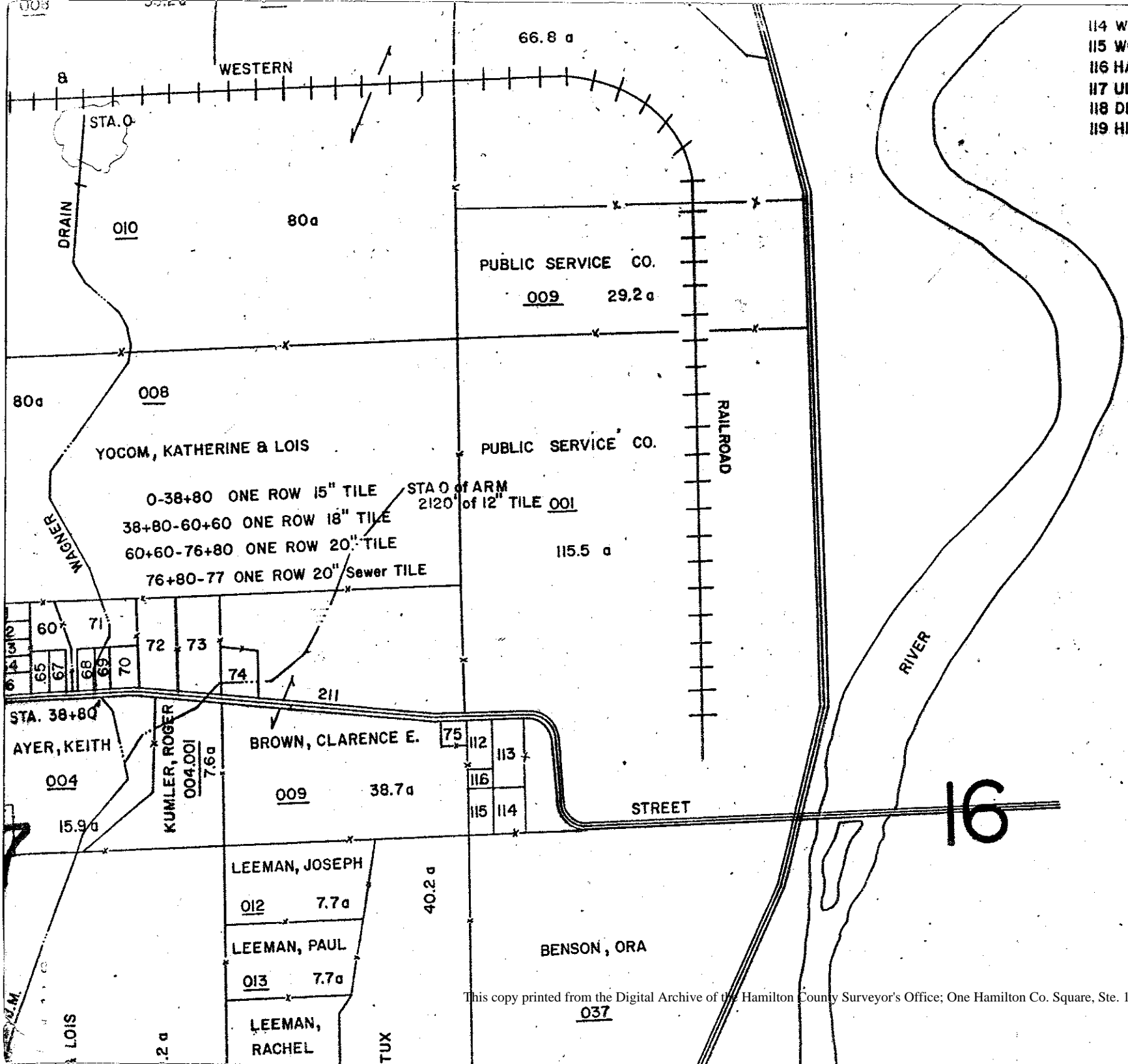
RE: J. M. Wagner Drain

I have found that the starting point of the legal description of the ~~James~~ <sup>JOHN</sup> M. Wagner Arm of the David Lemming Drain was described incorrectly. This description is found in Commissioners Record Book 10 Page 525 recorded October 7, 1897. Instead of reading beginning 574' North, it should read 574' South.

A revised map is attached.

KCW/no

*Kenton C. Ward*  
Kenton C. Ward—County Surveyor



114 WILLIAM, DANA  
 115 WOOLDRIDGE, CHARLES  
 116 HADLEY, ALFRED  
 117 ULMAN, PAUL  
 118 DEERFIELD INC.  
 119 HIATT, DAVID & WF.

" 003 1.0 a  
 " 004 1.0 a  
 " 005 .5 a  
 07-16-00-00-001 115.5  
 07-21-00-00-001 43  
 07-09-00-00-009 50

16

PREPARED BY