



*Kenton C. Ward, CFM*  
Surveyor of Hamilton County

Phone (317) 776-8495

Fax (317) 776-9628

**Map Correction-Field Verification**

Suite 188

One Hamilton County Square  
Noblesville, Indiana 46060-2230

**Drain Number:** 240

**Drain Length:** 11,669

**Drain Name:** Springmill Ponds- Sec. 3

**Change + / - :** -20

**Date:** 10-17-2012

**New Length:** 11,649

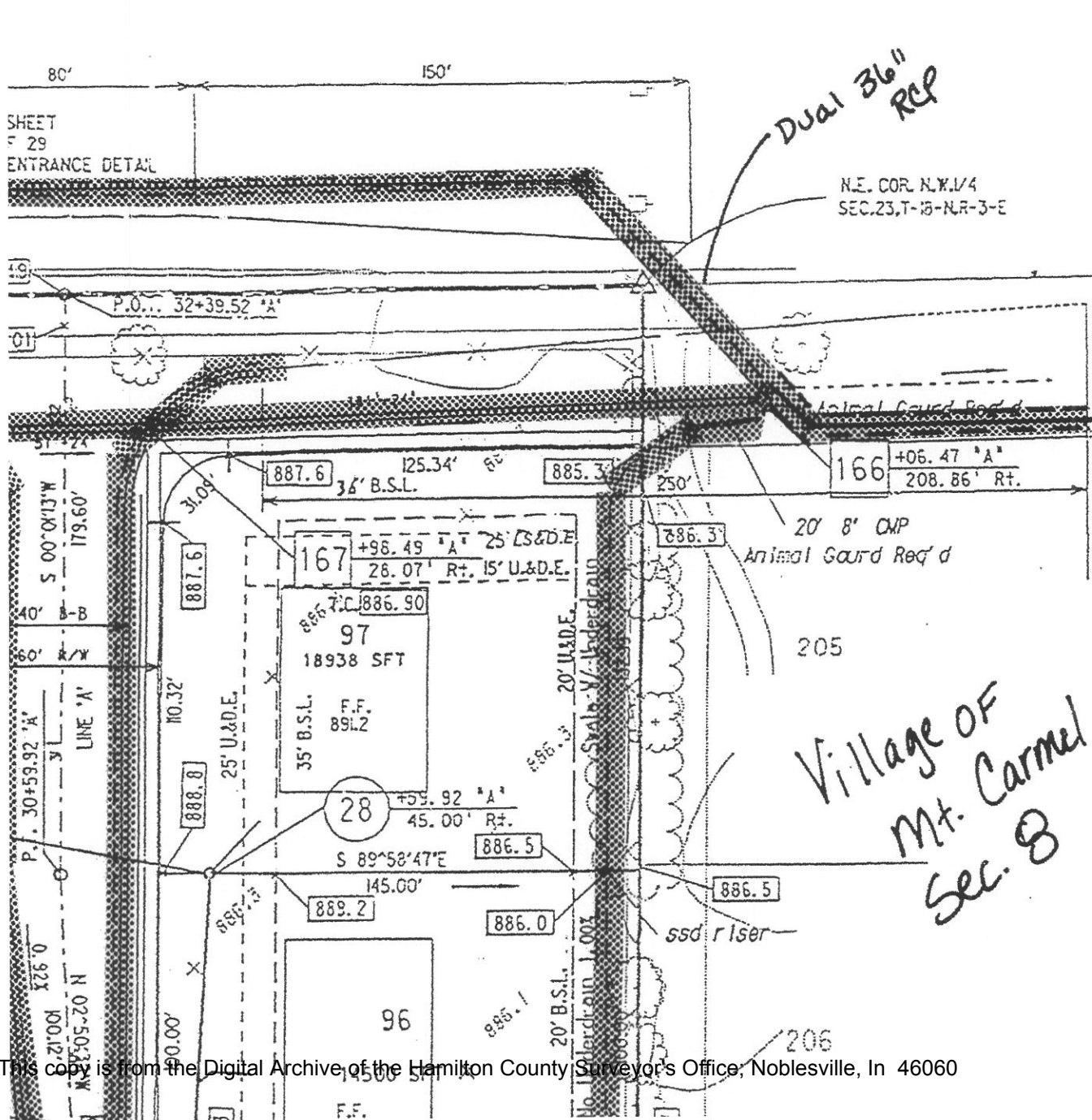
**Verified By:** SLM, Inspector

---

**Notes & Sketch:** See attached Map

This is to correct the 146<sup>th</sup> Street improvements Final Report. The 146<sup>th</sup> Street Improvements removed 20 feet of 8" CMP. This was never documented in the 146<sup>th</sup> Street Improvement Report.

Suzanne L. Mills  
GIS Specialist



Structure #	Structure Type
1-6	Manhole Type
7	Existing
8-32	Manhole Type
101	End Section
102	Manhole Type
103	Inlet Type 'B'
104	Inlet Type 'A'
105	End Section
106	Manhole Type
107	Manhole Type
108	Manhole Type
109	Inlet Type 'B' (M)
110	Manhole Type
111	Manhole Type
112	Manhole Type
113	Manhole Type
114	Inlet Type 'B'
115	Inlet Type 'A'
116	Manhole Type
117	Inlet Type 'A'
118	Inlet Type 'B'
119	Inlet Type 'A'
120	End Section
121	Manhole Type
122	Manhole Type
123	Inlet Type 'B' (M)
124	Inlet Type 'B'
125	Inlet Type 'A'
126	Inlet Type 'A' (M)
127	Inlet Type 'A'
128	End Section
129	Manhole Type (M)
130	Manhole Type (M)
131	Inlet Type (M)
132	Inlet Type 'B'
133	Inlet Type 'A'
134	End Section
135	Manhole Type (M)
136	Inlet Type 'B'
137	Inlet Type 'B'
138	Inlet Type 'A'
139	End Section
140	Inlet Type 'B' (M)
141	Manhole Type (M)
142	Manhole Type (M)
143	Manhole Type (M)
144	Manhole Type (M)
145	Manhole Type (M)
146	Manhole Type (M)
147	Manhole Type (M)
148	Inlet Type 'B' (M)
149	Inlet Type 'A' (M)
150	Inlet Type 'A'