



Kenton C. Ward, CFM
Surveyor of Hamilton County
Phone (317) 776-8495
Fax (317) 776-9628

Suite 188
One Hamilton County Square
Noblesville, Indiana 46060-2230

Map Correction-Field Verification

Drain Number: #330 Sly Run

Drain Length: 1792

Drain Name: Pebble Brook: Palmer Extension

Change + / - : -46

Date: 10-26-2012

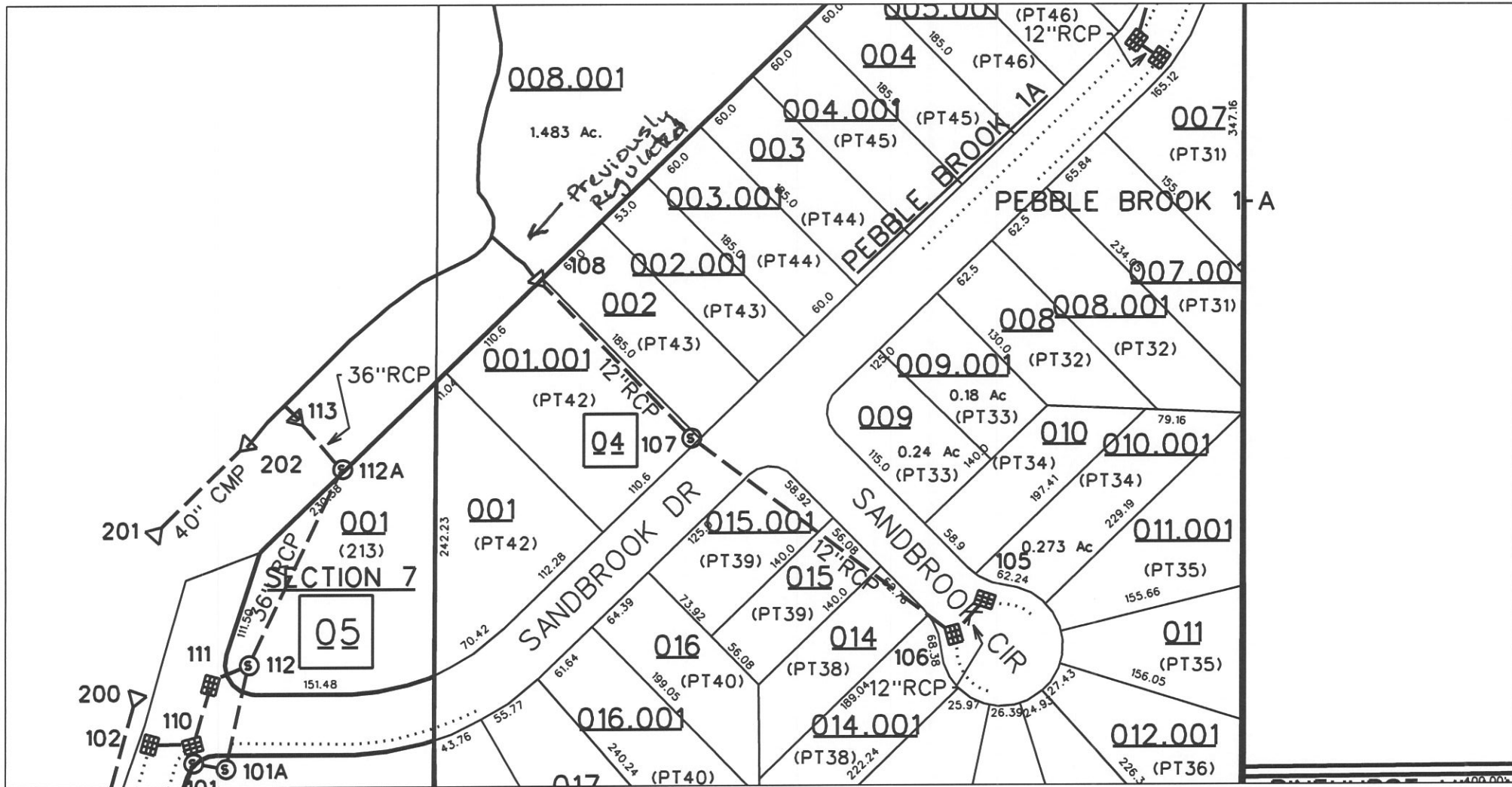
New Length: 1746

Verified By: SLM

Notes & Sketch: See attached Map

The portion of open ditch listed in the Surveyor's Report (dated August 16, 2012 and approved on October 22, 2012) as the South Outlet was previously regulated. It was regulated as open ditch with Pebble Brook Section 1A on January 11, 1988. The portion of open ditch begins at Structure 108 of Pebble Brook Sec. 1A

Suzanne L. Mills
GIS Specialist



sub_rg_drn.dgn 10/26/2012 1:43:52 PM