

Kenton C. Ward, CFM
Surveyor of Hamilton County
Phone (317) 776-8495
Fax (317) 776-9628

Suite 188
One Hamilton County Square
Noblesville, Indiana 46060-2230

Map Correction-Field Verification

Drain Number: #347

Drain Length: N/A

Drain Name: Sand Creek Tile Drain

Change +/-: N/A

Date: 8-8-2013

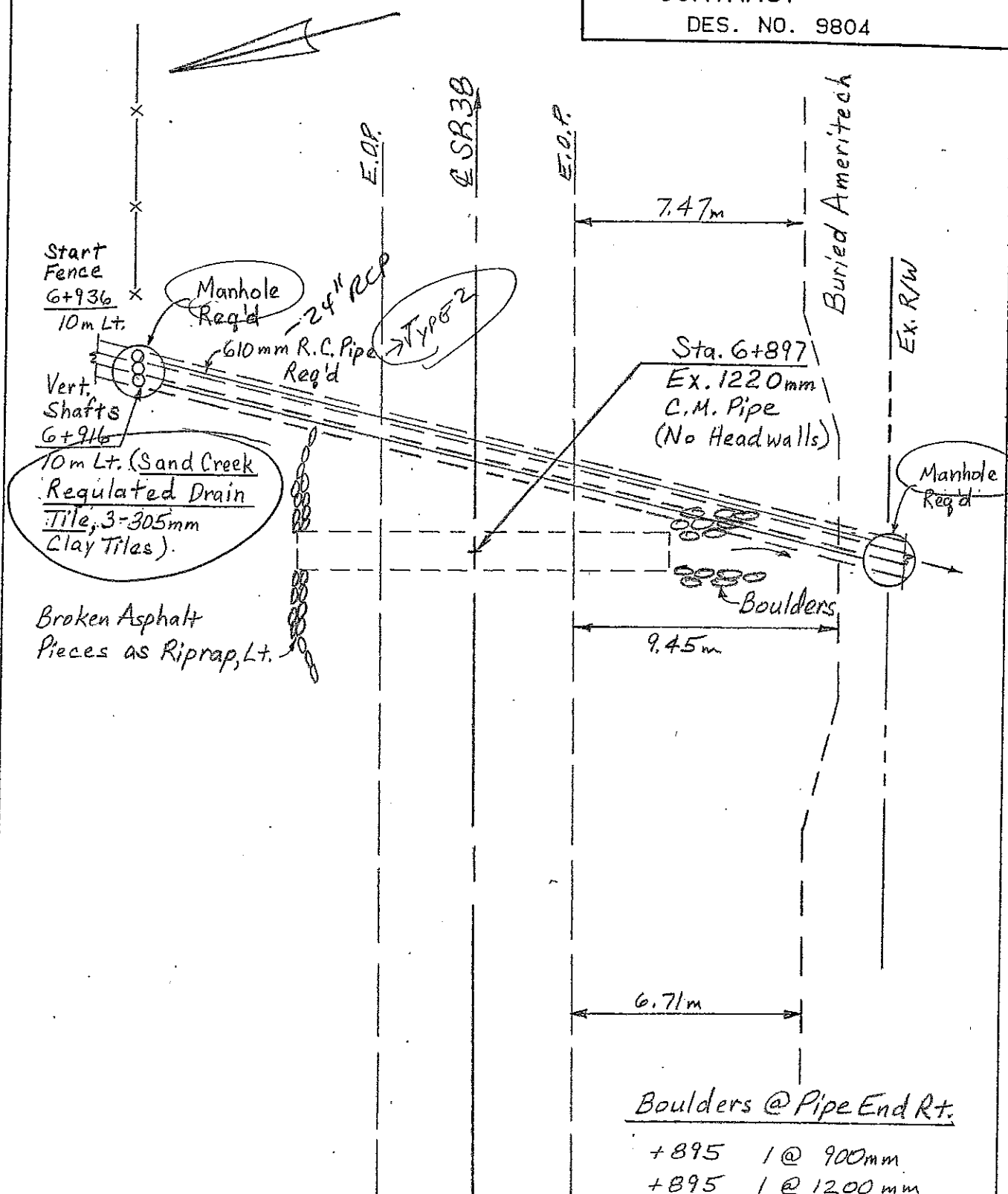
New Length: N/A

Verified By: SLM

Notes & Sketch:

The SR 38 Road improvements completed in 1999 replaced a portion of the Sand Creek tile drain. The original 3 runs of 12" tile was replaced between Sta 14+75 to Sta 15+81 with 24" RCP. Two manholes were placed on the north & south sides of the road.

Suzanne L. Mills
GIS Specialist



PLAN

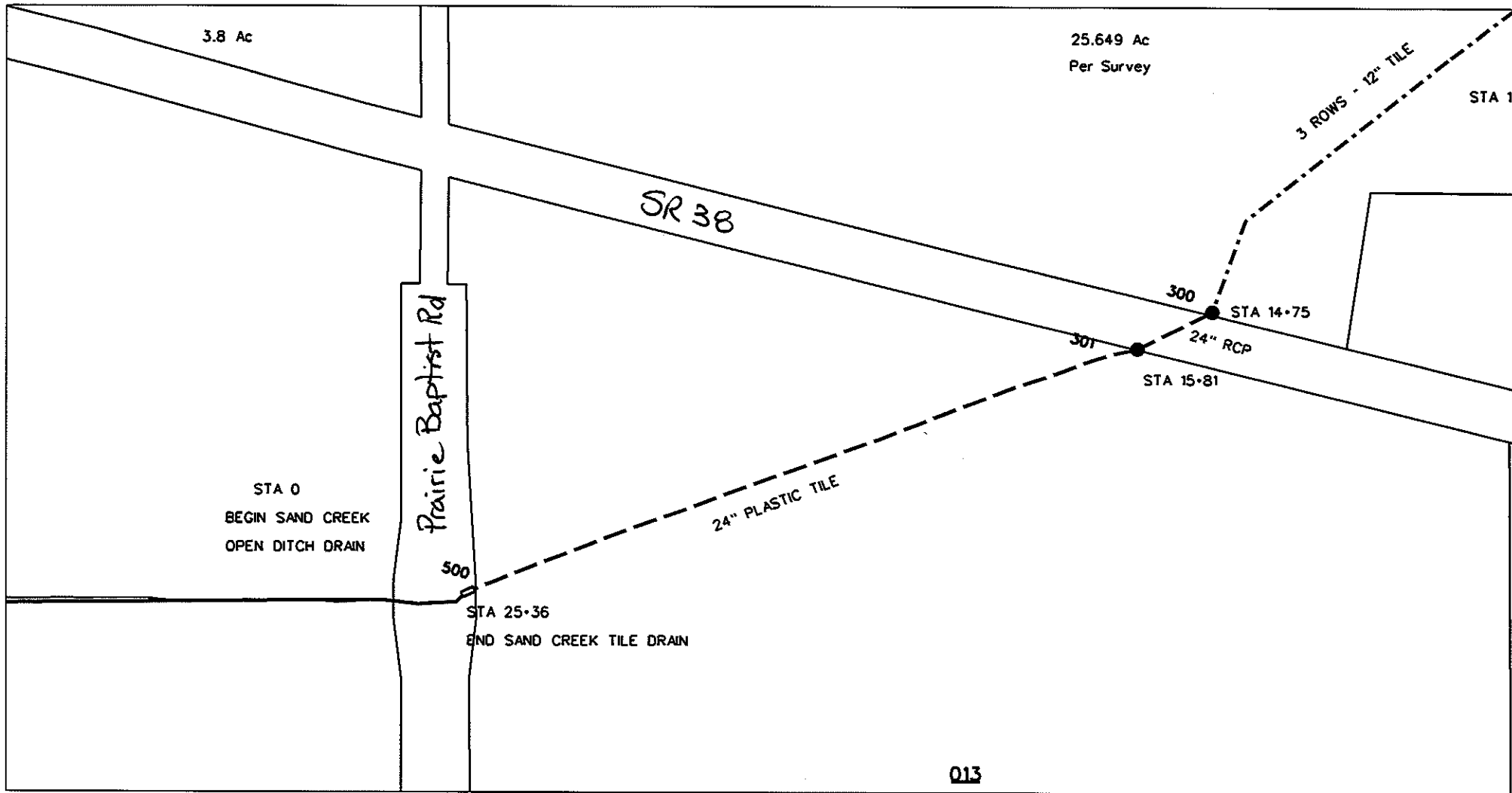
SMALL STRUCTURE REPLACEMENT

STA. 6+897 - R.C. BOX CULVERT W/HEADWALLS,
& REGULATED DRAIN REPLACEMENT FROM R/W TO R/W

(see Additional Details for Culvert & Headwalls)

Boulders @ Pipe End Rt.

- +895 1 @ 900mm
- +895 1 @ 1200mm
- +896 1 @ 600mm
- +897 1 @ 600mm
- +898 2 @ 600mm
- +898 1 @ 900mm
- +899 1 @ 900mm



reg_drain_hc.dgn 8/8/2013 2:19:59 PM