

Kenton C. Ward, CFM
Surveyor of Hamilton County
Phone (317) 776-8495
Fax (317) 776-9628

Suite 188
One Hamilton County Square
Noblesville, Indiana 46060-2230

Map Correction-Field Verification

Drain Number: #361

Drain Length: n/a

Drain Name: Carrie Horney – Arm 1

Change +/- : n/a

Date: 06-23-2017

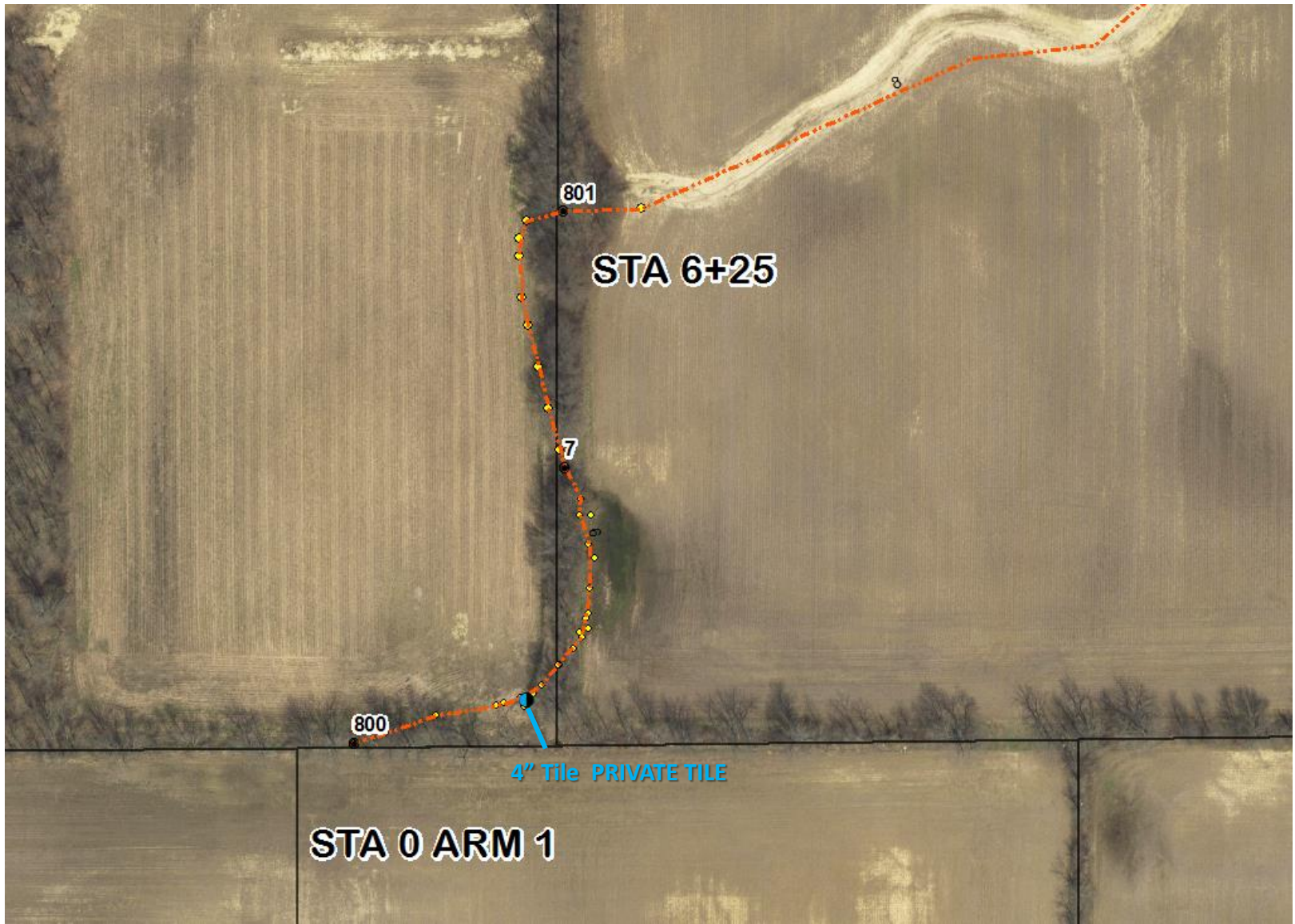
New Length: n/a

Verified By: SAB, SLM

Notes & Sketch:

Tile was repaired with WO-2017-00081. Two breathers were set – Structures 800 & 801.
See attached map for further details. Tile and breathers were shot with GPS.

Suzanne L. Mills
GIS Specialist



This map was compiled by the Hamilton County Surveyor's Office. Although strict accuracy standards have been employed in the compilation of this map, Hamilton County does not warrant or guarantee the accuracy of the information contained herein and disclaims any and all liability resulting from any error or omission in this map.

#361 CARRIE HORNEY ARM 1

Printing Date: 06/23/2017
 Prepared By: Suzanne Mills, GISP
 Hamilton County Surveyor's Office
 One Hamilton County Square, Ste 188
 Noblesville, IN 46060
 317-776-8495

